



FTTH OUTDOOR CABINET

2x40U PASSIVE, 500 mm DEPTH

GROLLEAU propose a 2x40U single skin outdoor SRO 500 mm depth to connect houses in **moderately dense areas**. The cabinet is full **removable** and **reassemblable**, without service interruption.

Aluminium **single skin** cabinet has a door, a roof, baseboards and **removable panels from the inside**, easily replaceable.



GRL010085A (FTTH G2 SP 2x40U D500)

MECANICAL CHARACTERISTICS

Type	FTTH PASSIVE Single skin conception 2x40U
Overall dimensions	W1626 x D500 x H2156 mm
Weight without equipments	190 kg
Cabinet	SRO single skin 2x40U, 500 mm depth
Height of pedestal	200 mm
Operating depth	40 mm between front face, equipments and door 290 mm for integration of equipments
Opening door	90 and 110°
	2 columns 19" 40U separated by a optical cable's resorber

FINITION & PROTECTION

Standard protection	IP 55 IK 10
Locking	3 points by european half cylindrical lock
Painting	10 standard textured RAL colors
Floor fixation	8 points accessibles from the inside of cabinet M10 screws & washers delivered with cabinet
Hinges & bolts	Strainless steel
Lifting points	4 points accessibles when roof removed
Briefcases	2 briefcases A4
Compartment support OF	1 adjustable rear frame 19", resorber side
Ventilation	Natural by holes in upper and lower part

MADE IN FRANCE



COMPLIANCE

- ▶ Climatic environment IEC 60068-2-2
- ▶ Corrosion IEC 60068-2-11
- ▶ Bonding of conduit
- ▶ IP protection NF EN 60529 / IP55
- ▶ Shock resistance EN 62262 / IK10
- ▶ Strength NF EN 61587-1 / 500N
- ▶ Vibration NF EN 61300-2-1

REFERENCED CABINET BY THE
FRENCH HISTORIC OPERATOR



FTTH OUTDOOR CABINET

2x40U PASSIVE, 500 mm DEPTH

INTEGRATION CHARACTERISTICS

Input cables	24 inputs cables at the right column 19" 12 inputs cables at the left column 19" 2 manholes for accessing cables in the pedestal
Optical cable	L : 4 m - \varnothing : 1,6 mm
	Deck reception of BAE tiedowns 1 at left and 2 at right
Guide tubes pins	In the back of column
Central resorber	With 10 vertical drums and 4 offset drums for the brewing of garters
Rings, guide cables	19" on amount resorber side
Pigtails collection	Specific progression
Plan of brewing	On the door
Installation	Earthing of cabinet by dowel through, accessible in the pedestal Equipotentiality realised on whole cabinet



OPTIONS

Template for fixation	In a concrete apron with sheath reservation in correspondance with entries of cables
Embase	Precasted in GRC (Glass - Reinforced fiber - Cement)
Colors	Specific RAL colors
Protection	Anti-display realised by bumped conessus on all cabinet sides



REFERENCES

FTTH G2 SP 2x40U D500 (standard)	GRL010085A
FTTH G2 SP 2x40U D500 E (pyramidal stamps - anti-display)	GRL00618A
FTTH G2 SP 2x40U D500 B (round stamps - anti-display)	GRL010852A
Template	GRL1314996
Embase	GRL010369A

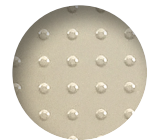
Standard



Pyramidal stamps



Round stamps



GROLLEAU

Rue du Moulin de la Buie - 49310 MONTILLIERS - FRANCE

Tel : 33 (0) 2 41 75 88 22 - Fax : 33 (0) 2 41 75 81 30

Email : info@grolleau.fr - Web : www.grolleau.fr